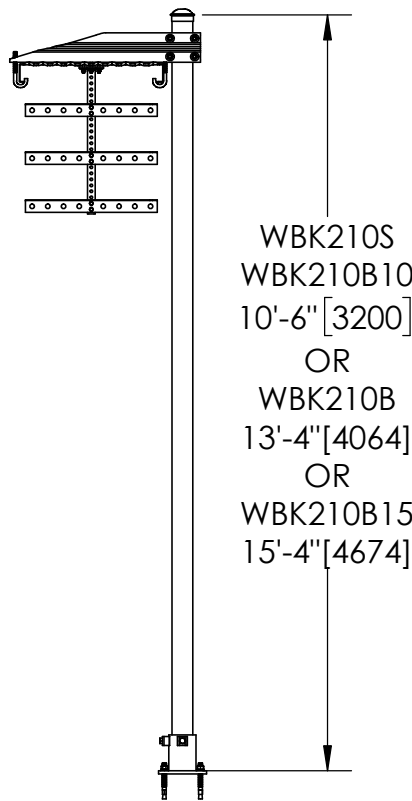
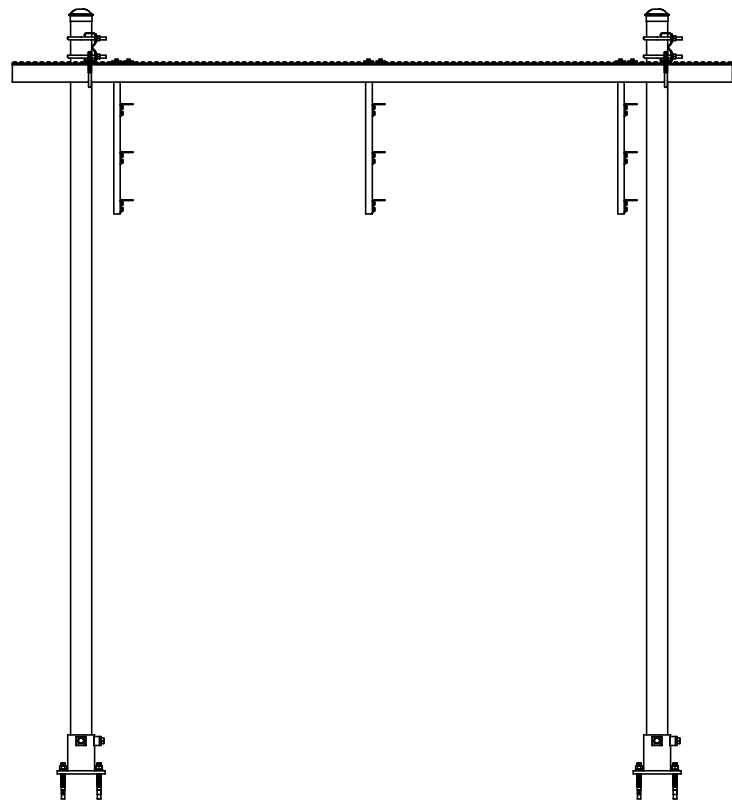
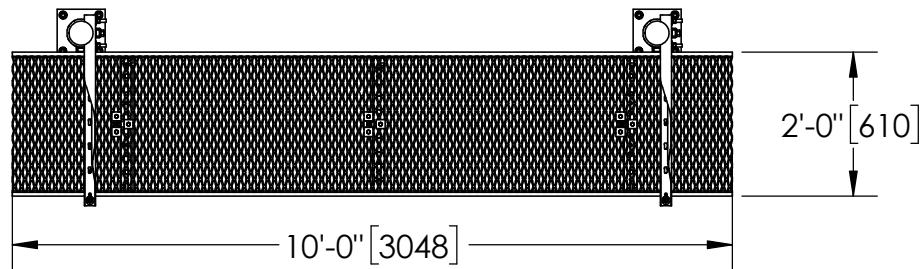
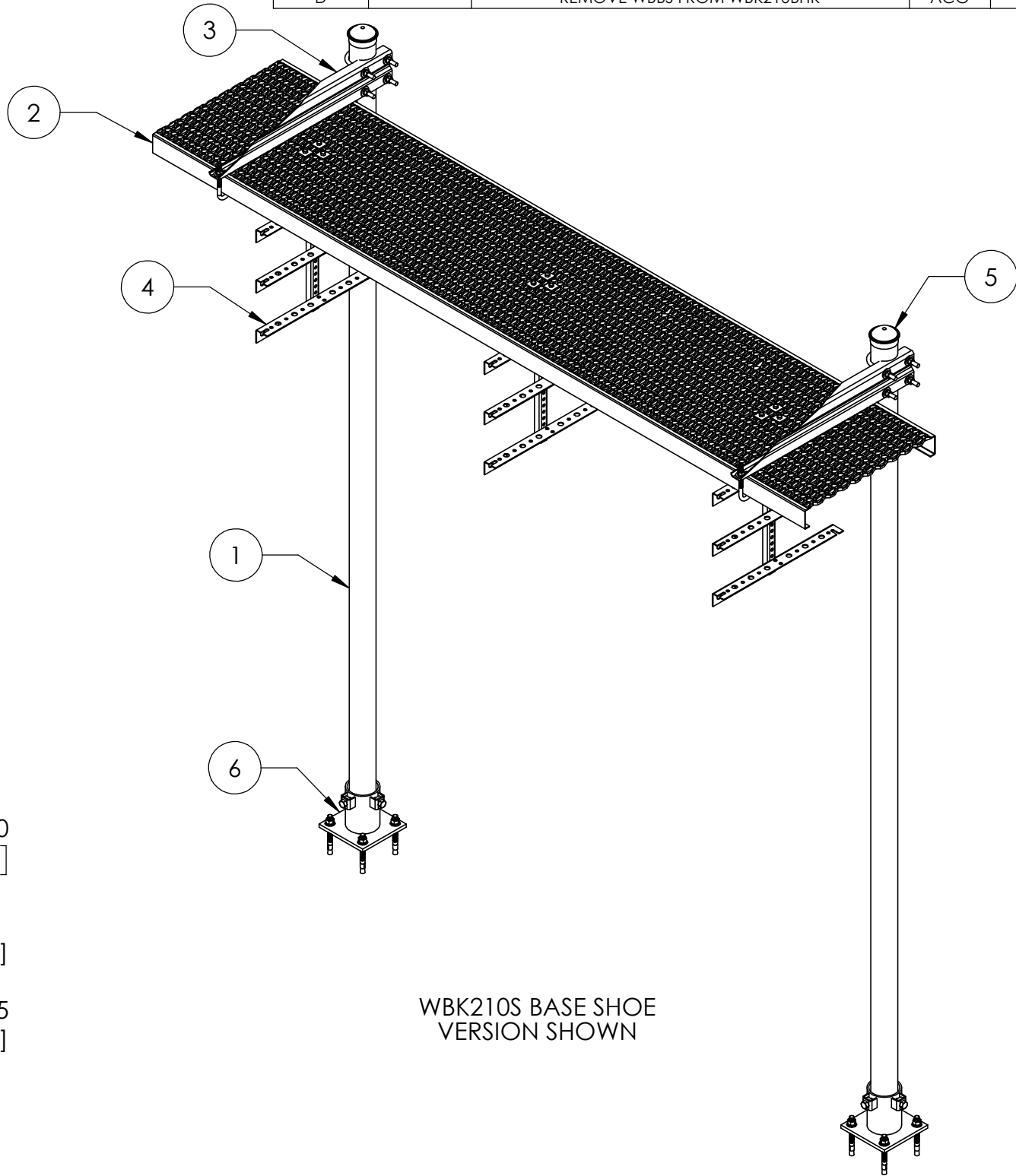


ITEM	PART NO.	DESCRIPTION	WBK210BHK	WBK210S	WBK210B10	WBK210B	WBK210B15	WEIGHT
1	MT547126	Ø 3.5" O.D. X 126" PIPE	-	2	2	-	-	61.93 LBS
1	MF130	Ø 3.5" O.D. X 13'-4" PIPE	-	-	-	2	-	101.38 LBS
1	MF273	Ø 3.5" O.D. X 15'-4" PIPE	-	-	-	-	2	116.58 LBS
2	WBCY210	SAFETY GRATING 24" X 10'	-	1	1	1	1	80.4 LBS
3	WBLB243	24" WAVEGUIDE BRIDGE SUPPORT KIT	2	2	2	2	2	9.90 LBS
4	WBT243	TRAPEZE KIT, 24"	3	3	3	3	3	12.07 LBS
5	PC034	Ø 3-1/2" O.D. PIPE CAP	2	2	2	2	2	0.74 LBS
6	WBBS	SLIP ON BASE SHOE KIT FOR 3-1/2" O.D. PIPE	-	2	-	-	-	15.26 LBS



REVISIONS				
REV.	ZONE	DESCRIPTION	BY	DATE
A		INITIAL RELEASE	ACG	02/15/22
B		ADD 2 KITS	ACG	05/17/22
C		ADDED WBK210BHK	ACG	07/25/22
D		REMOVE WBBS FROM WBK210BHK	ACG	08/22/22



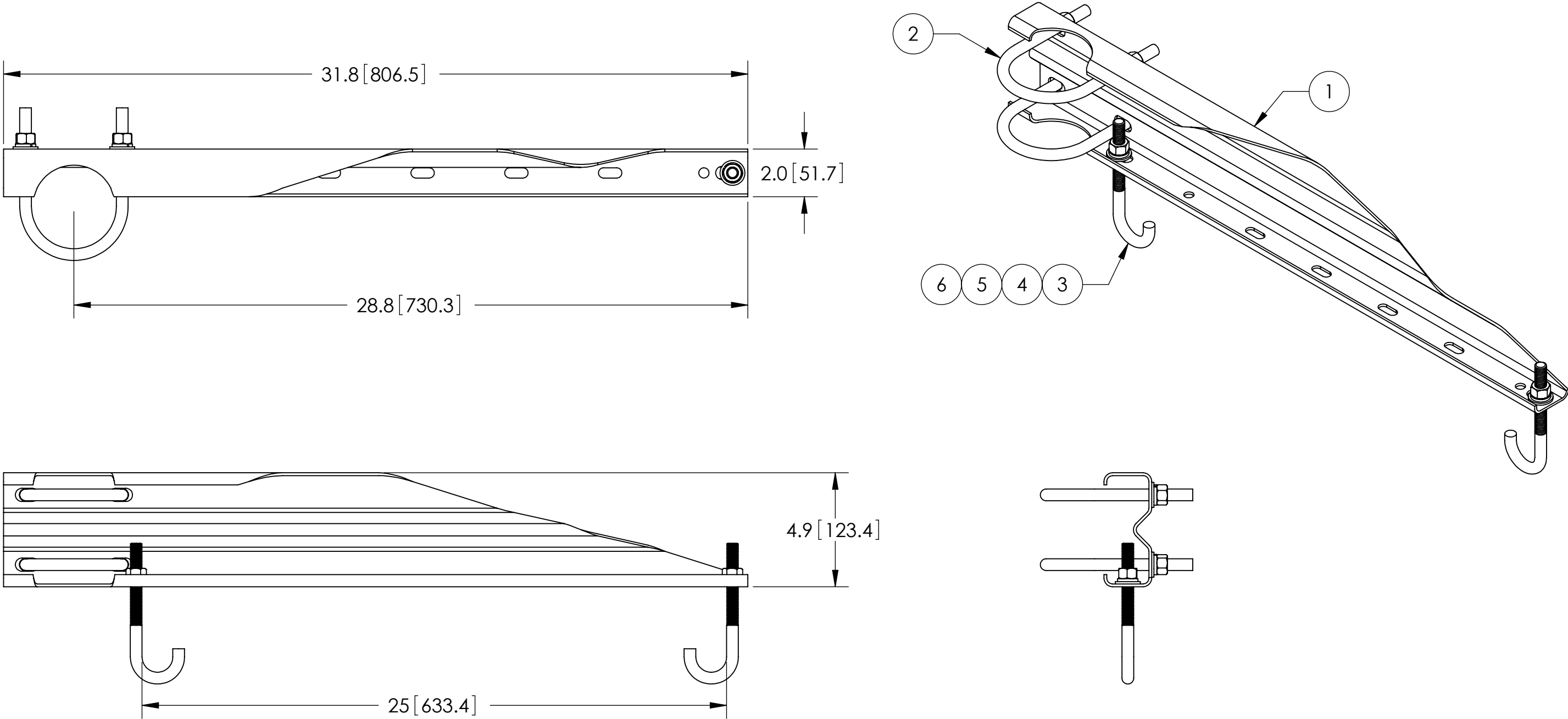
WBK210S BASE SHOE
VERSION SHOWN

NOTES:
1. ALL METRIC DIMENSIONS ARE IN BRACKETS.

These drawings and specifications are proprietary property and may be used only for the specific purpose authorized in writing. ALL DIMENSIONS ARE IN INCHES U.O.S. TOLERANCES UNLESS OTHERWISE SPECIFIED: .X = ± .06 ANGLES ±2° .XX = ± .03 FRACTIONS ±1/32 .XXX= ± .010 REMOVE BURRS AND BREAK EDGES .005	DRAWN BY: ACG	SHEET: 1 of 1	PART NUMBER: WBK210-Series
	CHECKED BY: MKV	SCALE: NTS	DESCRIPTION: 24" X 10' WAVEGUIDE BRIDGE KIT (BURIAL PIPE OR BASE SHOE)
	DATE: 03/11/22	MATERIAL: ASTM A36, A53, A568	DRAWING TYPE: ASSEMBLY DRAWING
	REVISION: D	FINISH: ASTM A123	
DO NOT SCALE THIS PRINT		WEIGHT: 354.91 LBS	

ITEM	PART NO.	DESCRIPTION	QTY.	WEIGHT
1	WBLB243.08	24" WAVEGUIDE BRIDGE SUPPORT BRACKET	1	7.14 LBS
2	GUB-4356	1/2" X 3-5/8" X 6" GALV U-BOLT KIT	2	0.83 LBS
3	WBJB6	1/2" J-BOLT	2	0.41 LBS
4	GWF-04	1/2" GALV FLAT WASHER	2	0.01 LBS
5	GWL-04	1/2" GALV LOCK WASHER	2	0.01 LBS
6	GN-04	1/2" GALV HEX NUT	2	0.02 LBS

REVISIONS				
REV.	ZONE	DESCRIPTION	BY	DATE
A		INITIAL RELEASE	WLJ	11/11/99
B		PART NUMBER CHANGE	MLL	12/29/99
C		REVISED & REDRAWN	JTS	08/22/00
D		REVISED & REDRAWN	MA	05/07/01
E		REDESIGNED FOR FORM, FIT & FUNCTION	CAM	02/11/02
F		NEW DESIGN WITH WBLB243.06 CHANNEL	ACG	10/08/02
G		REPLACE WBLB243.06 WITH WBLB243.08	ACG	01/30/08
H		CHANGE DIMENSION CALLOUTS	MSM	2/13/08
J		CORRECT PART NUMBER CALL-OUT	MSM	08/08/08

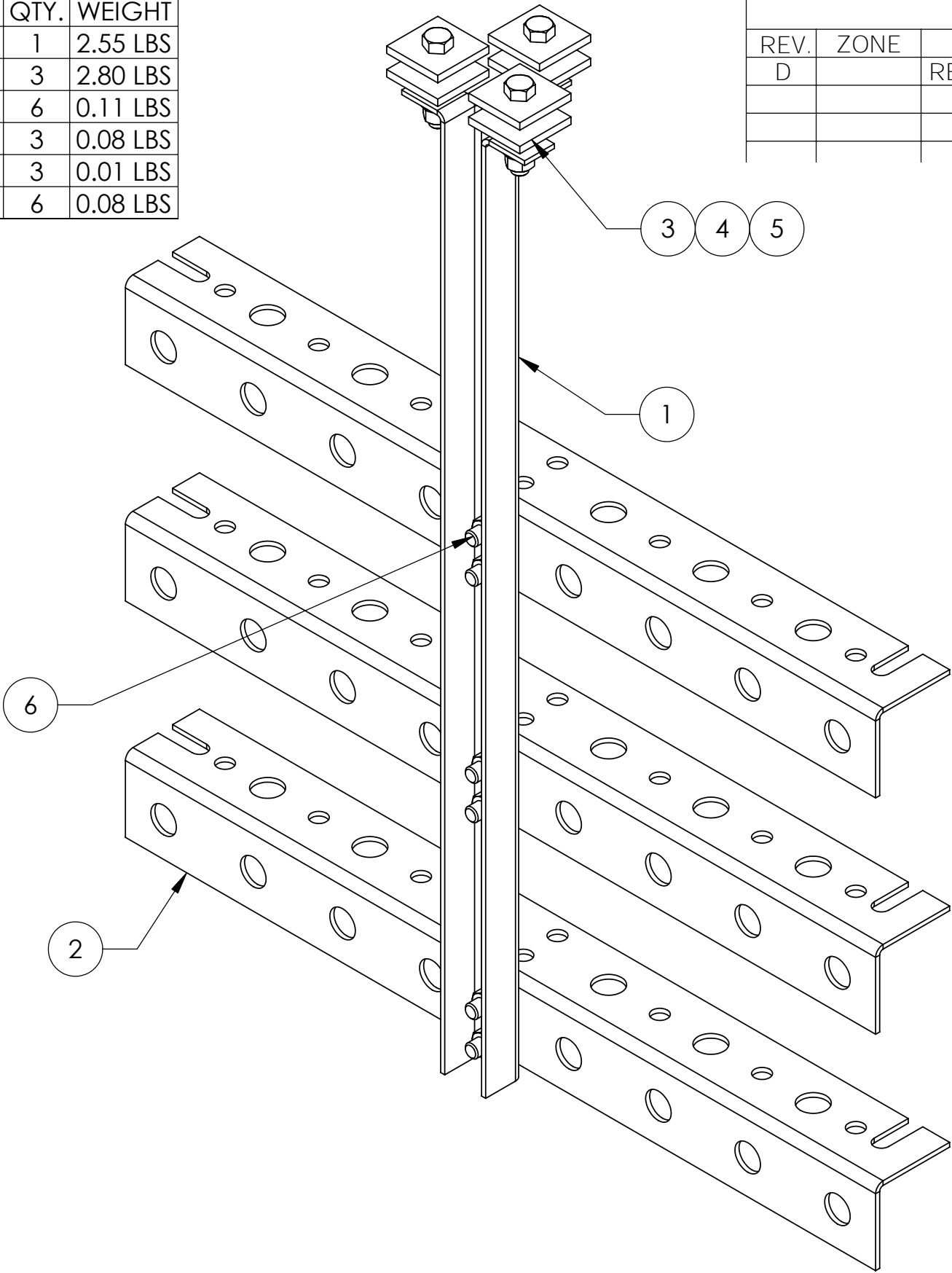


NOTES:
1. ALL METRIC DIMENSIONS ARE IN BRACKETS.

These drawings and specifications are proprietary property and may be used only for the specific purpose authorized in writing. ALL DIMENSIONS ARE IN INCHES U.O.S. TOLERANCES UNLESS OTHERWISE SPECIFIED: .X = ± .06 ANGLES ±2' .XX = ± .03 FRACTIONS ±1/32 .XXX= ± .010 REMOVE BURRS AND BREAK EDGES .005 DO NOT SCALE THIS PRINT	DRAWN BY: ACG	SHEET: 2 of 4	PART NUMBER: WBLB243
	CHECKED BY: TP	SCALE: NTS	DESCRIPTION: 24" WAVEGUIDE BRIDGE SUPPORT KIT
	DATE: 03/08/05	MATERIAL: A36	DRAWING TYPE: ASSEMBLY DRAWING
	REVISION: J	FINISH: GALV A123	
		WEIGHT: 10.07 LBS	

ITEM	PART NO.	DESCRIPTION	QTY.	WEIGHT
1	WBT243.01	VERTICAL TRAPEZE SECTION	1	2.55 LBS
2	WBT243.02	HORIZONTAL TRAPEZE SECTION	3	2.80 LBS
3	MT-387	SQUARE WASHER, 1½" X 1½" W/ 7/16" HOLE	6	0.11 LBS
4	GB-03205	3/8" X 2" GALV BOLT KIT	3	0.08 LBS
5	GWF-03	3/8" GALV FLAT WASHER	3	0.01 LBS
6	GB-03105	3/8" X 1" GALV BOLT KIT	6	0.08 LBS

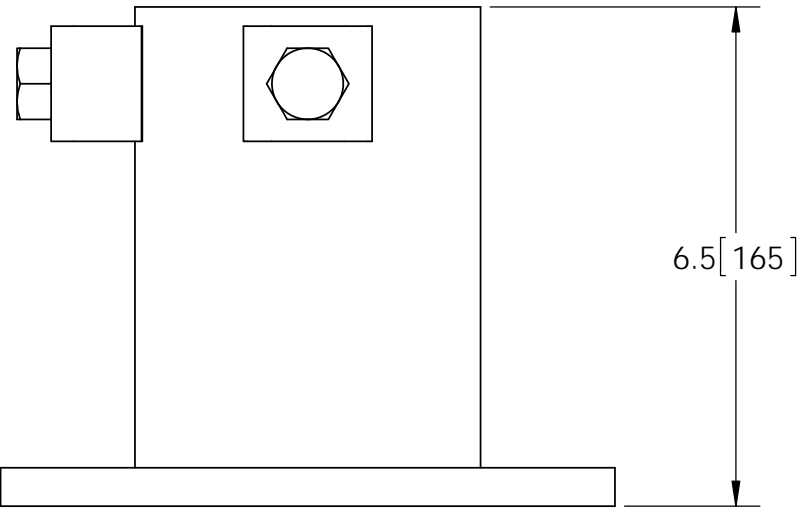
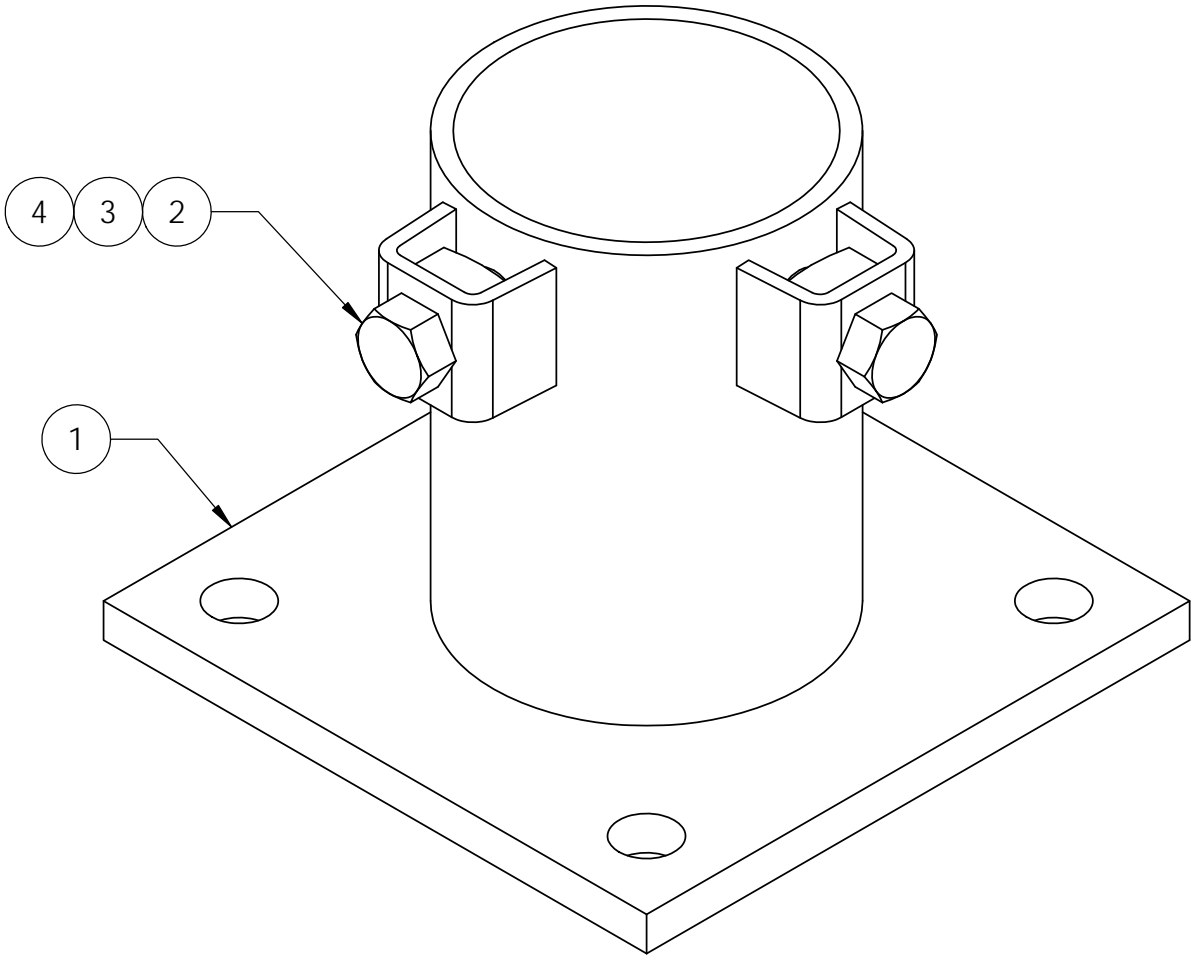
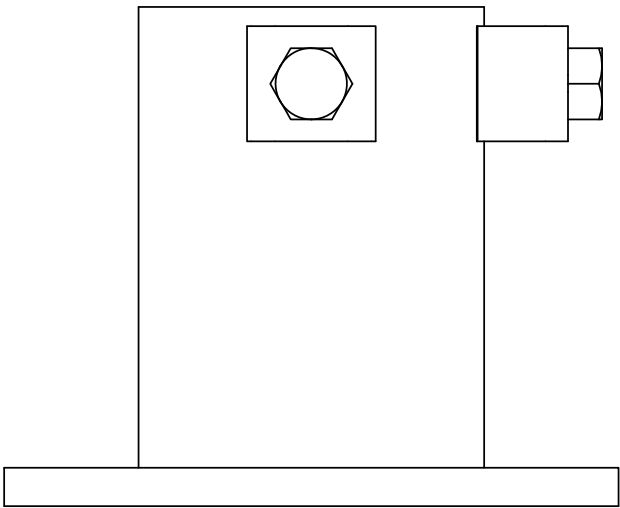
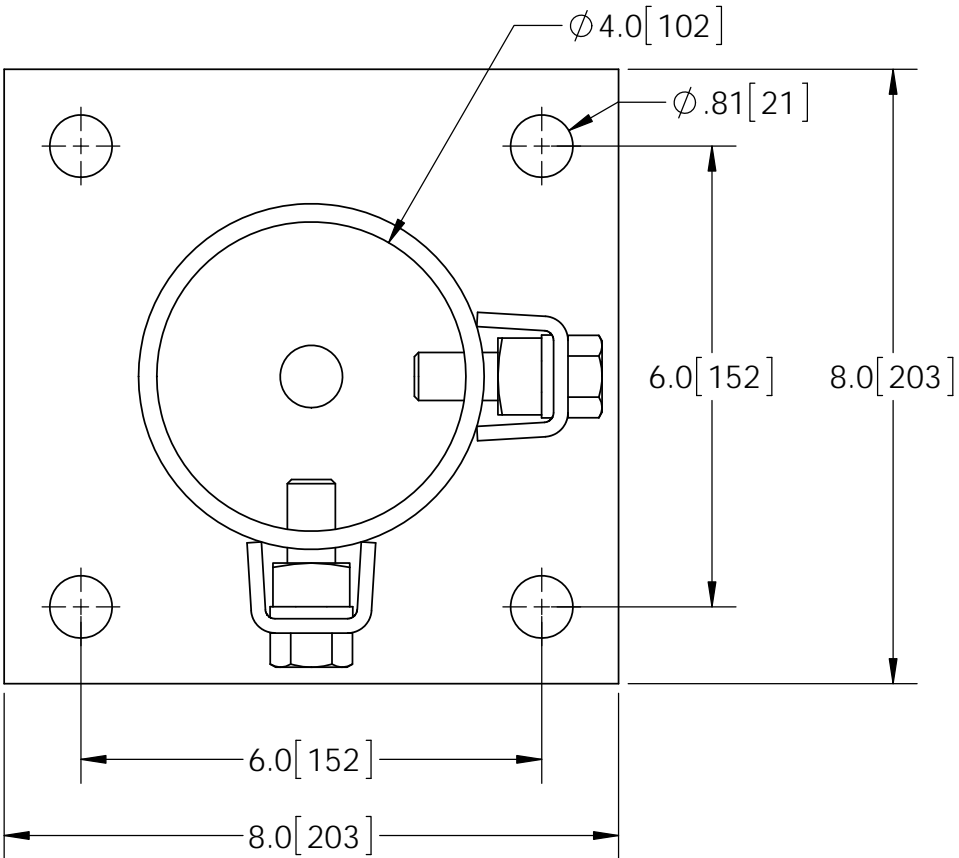
REVISIONS				
REV.	ZONE	DESCRIPTION	BY	DATE
D		REVISED	DI	1/26/05



These drawings and specifications are proprietary property and may be used only for the specific purpose authorized in writing. ALL DIMENSIONS ARE IN INCHES U.O.S. TOLERANCES UNLESS OTHERWISE SPECIFIED: .X = .06 ANGLES 2° .XX = .03 FRACTIONS 1/32 .XXX= .010 REMOVE BURRS AND BREAK EDGES .005 DO NOT SCALE THIS PRINT	DRAWN BY: DI	SHEET: 3 of 4	PART NUMBER: WBT243
	CHECKED BY: TP	SCALE: NTS	DESCRIPTION: TRAPEZE KIT
	DATE: 1/27/05	MATERIAL: A36	DRAWING TYPE: ASSEMBLY DRAWING
	REVISION: D	FINISH: GALV A123	
		WEIGHT: 12.43 LBS	

ITEM	PART NO.	DESCRIPTION	QTY.	WEIGHT
1	WBBS.01	WELDED BASE SHOE	1	14.46 LBS
2	GB05205.01	5/8"-11 UNC X 2" GALV HEX BOLT	2	0.27 LBS
3	GWL-06	5/8" GALV LOCK WASHER	2	0.03 LBS
4	SQN-06	5/8"-11 UNC GALV SQUARE NUT	2	0.12 LBS

REVISIONS					
REV.	ECN	ZONE	DESCRIPTION	BY	DATE
A			INITIAL RELEASE	ACG	10/18/13



- NOTES:
- ALL METRIC DIMENSIONS ARE IN BRACKETS.
 - STAMP PART IDENTIFICATION NUMBER.
 - WELDING WORKMANSHIP PER AWS D1.1, TABLE 6.1.

These drawings and specifications are the proprietary property of manufacturer and may be used only for the specific purpose authorized in writing by manufacturer.	DRAWN BY:		SHEET:		PART NUMBER:	
	ACG		4 of 4		WBBS	
	CHECKED BY:		SCALE:		DESCRIPTION:	
	CC		NTS		SLIP ON BASE SHOE KIT FOR 3-1/2" O.D. PIPE	
ALL DIMENSIONS ARE IN INCHES U.O.S. TOLERANCES UNLESS OTHERWISE SPECIFIED: .X = ± .06 ANGLES ±2" .XX = ± .03 FRACTIONS ±1/32 .XXX= ± .010 REMOVE BURRS AND BREAK EDGES .005	DATE:		MATERIAL:		DRAWING TYPE:	
	10/18/13		A36, A53		ASSEMBLY DRAWING	
	REVISION:		FINISH:			
	A		GALV A123			
DO NOT SCALE THIS PRINT			WEIGHT			
			15.30 LBS			