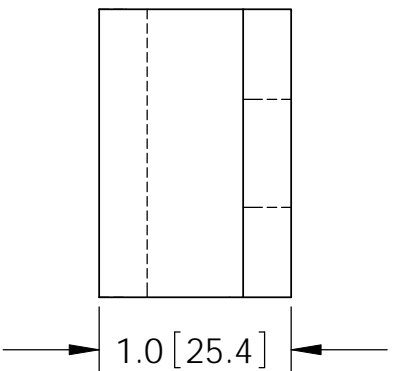
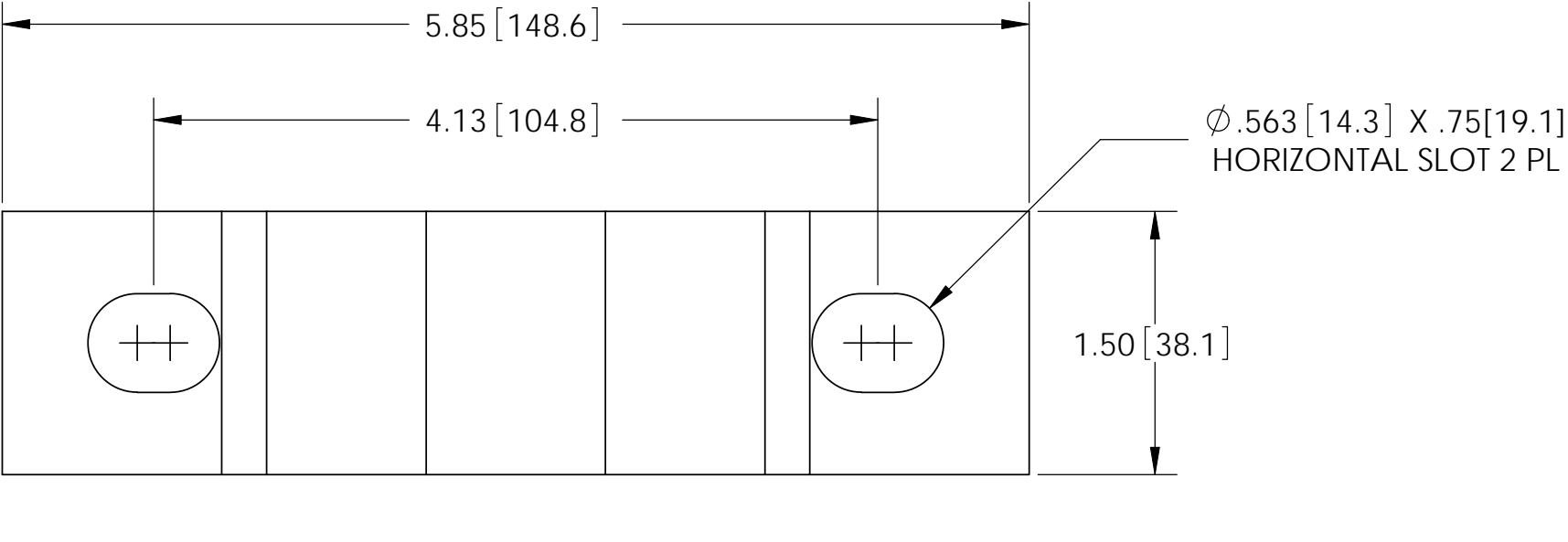
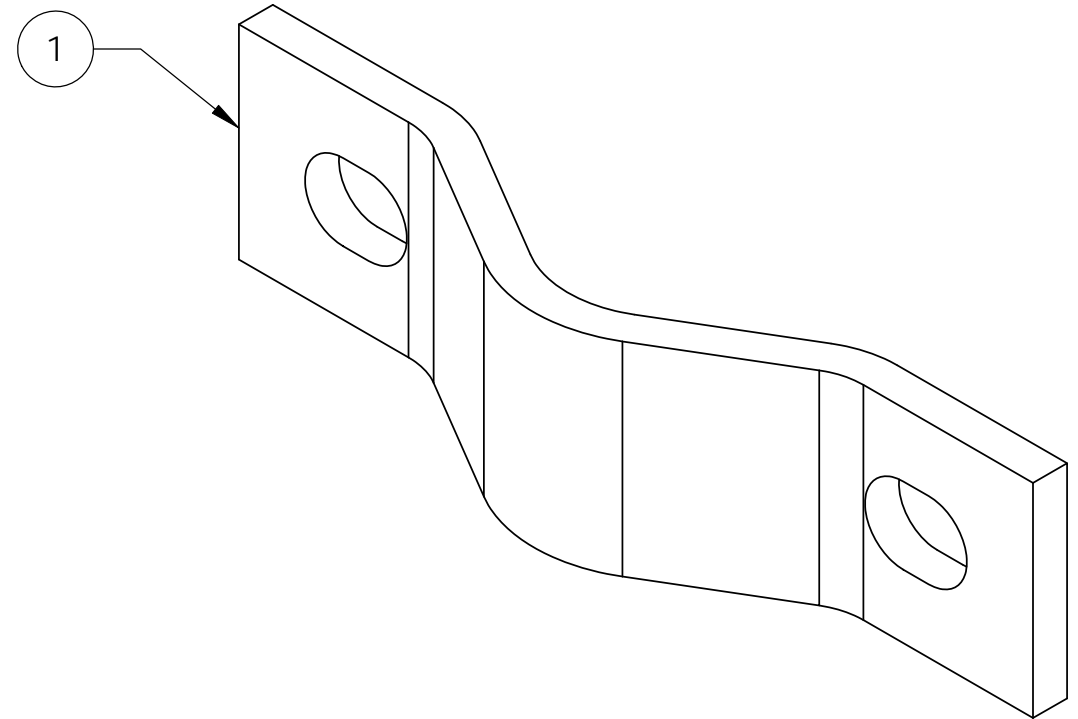
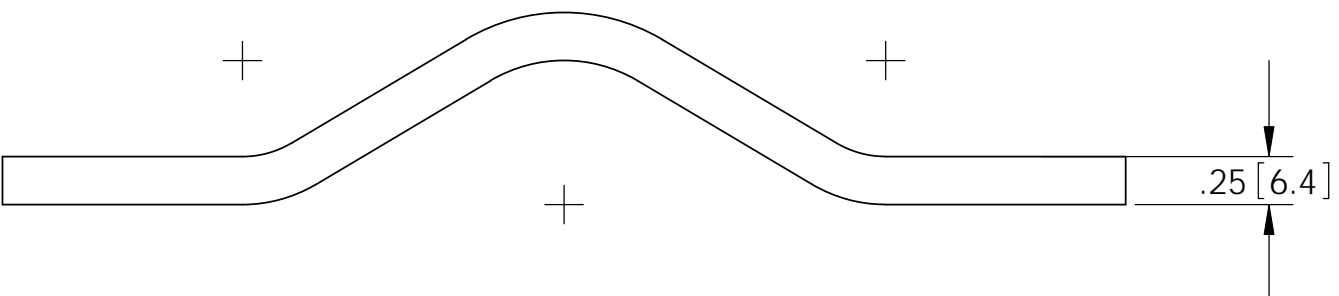


ITEM	PART NO.	DESCRIPTION	QTY.	WEIGHT
1	ACP10.01	1.5" - 3.5" O.D. CLAMP HALF	1	0.61 LBS

REVISIONS				
REV.	ZONE	DESCRIPTION	BY	DATE
B		REVISED & REDRAWN	LAP	12/01/00
C		REVISED & REDRAWN	MFS	02/21/01
D		CHANGED DESCRIPTION	JTS	02/23/01
E		REDRAWN IN SOLIDWORKS	ACG	09/27/06



NOTES:
 1. ALL METRIC DIMENSIONS ARE IN BRACKETS.
 2. STAMP PART IDENTIFICATION NUMBER.

These drawings and specifications are proprietary property and may be used only for the specific purpose authorized in writing. ALL DIMENSIONS ARE IN INCHES U.O.S. TOLERANCES UNLESS OTHERWISE SPECIFIED: .X = $\pm .06$ ANGLES $\pm 2^\circ$.XX = $\pm .03$ FRACTIONS $\pm 1/32$.XXX = $\pm .010$ REMOVE BURRS AND BREAK EDGES .005 DO NOT SCALE THIS PRINT	DRAWN BY: ACG	SHEET: 1 of 1	PART NUMBER: ACPI0
	CHECKED BY: CC	SCALE: NTS	DESCRIPTION: 1.5" - 3.5" O.D. CLAMP HALF
	DATE: 09/27/06	MATERIAL: A36	DRAWING TYPE: ASSEMBLY DRAWING
	REVISION: E	FINISH: GALV A123 WEIGHT: 0.61 LBS	