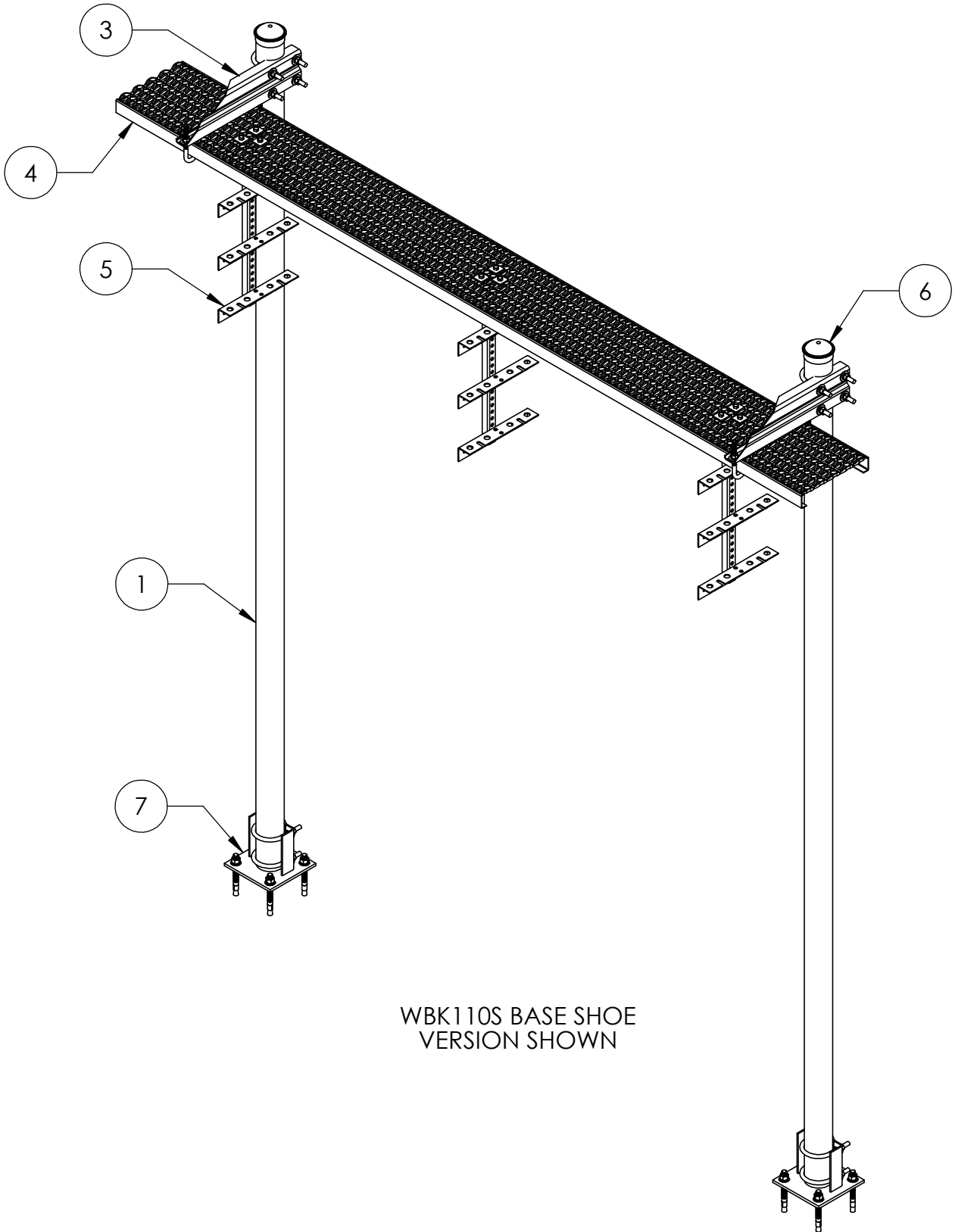
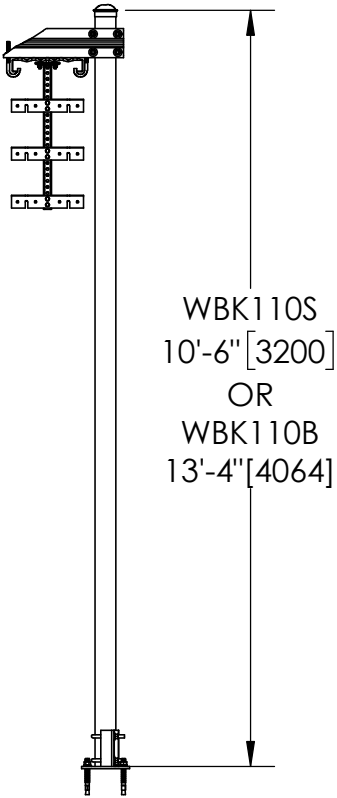
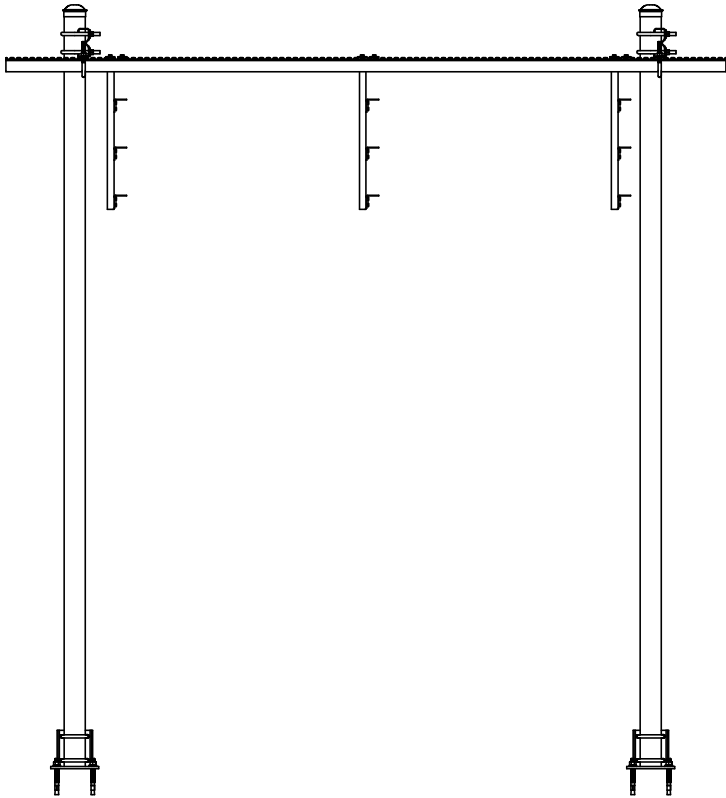
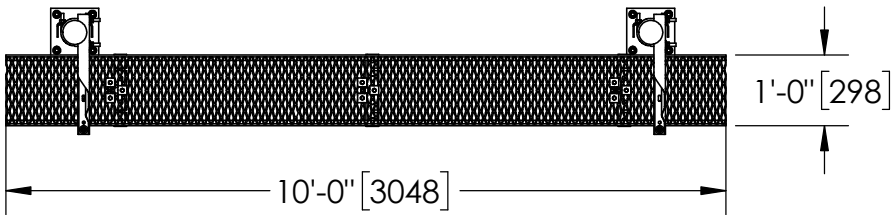


ITEM	PART NO.	DESCRIPTION	WBK110S	WBK110B	WEIGHT
1	MT547126	Ø 3.5" O.D. X 10'-6" PIPE	2	-	79.83 LBS
2	MF-130	Ø 3.5" O.D. X 13'-4" PIPE	-	2	101.38 LBS
3	WBLB123	12" WAVEGUIDE BRIDGE KIT	2	2	7.66 LBS
4	WBCY110	SAFETY GRATING 12" X 10'	1	1	70 LBS
5	WBT123	TRAPEZE KIT, 12"	3	3	8.39 LBS
6	PC034	Ø 3-1/2" O.D. PIPE CAP	2	2	0.74 LBS
7	WBBS	BASE SHOE FOR Ø 3-1/2" O.D. PIPE	2	-	14.06 LBS



WBK110S BASE SHOE
VERSION SHOWN

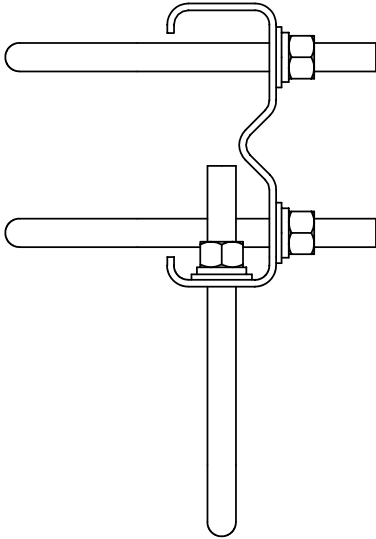
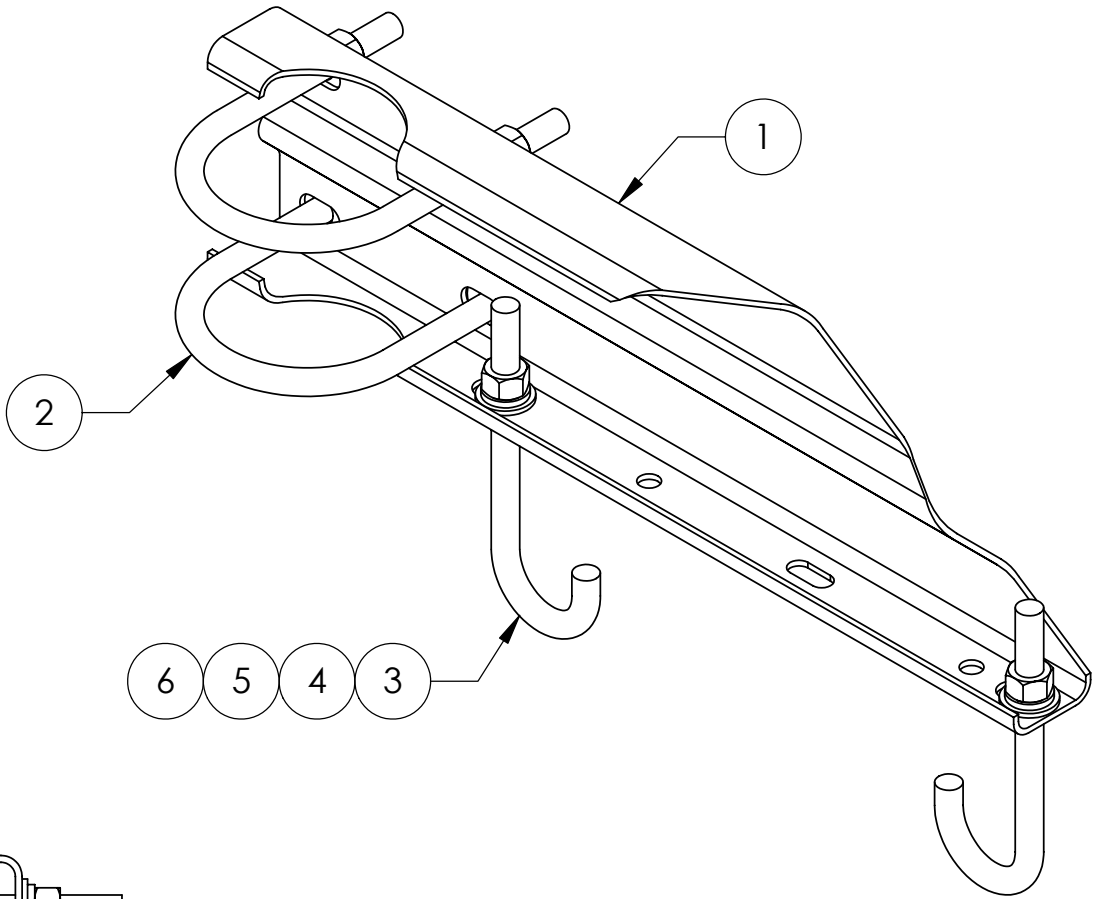
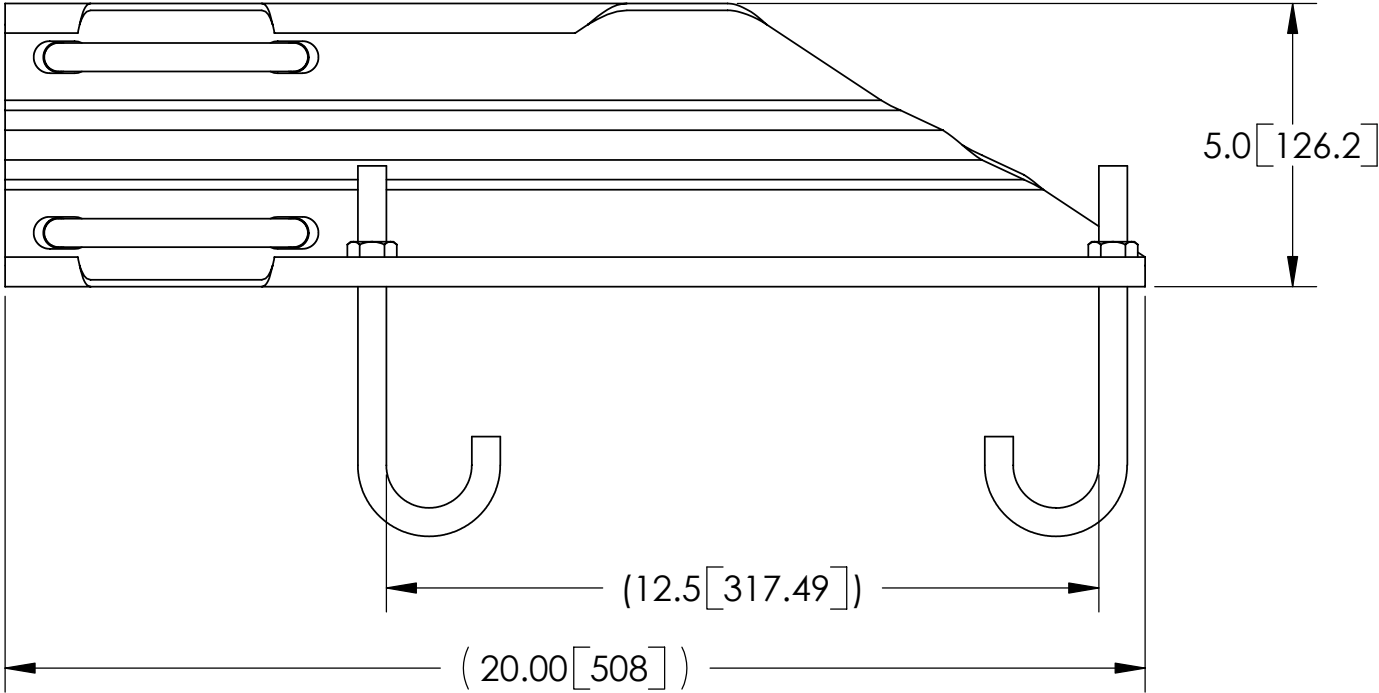
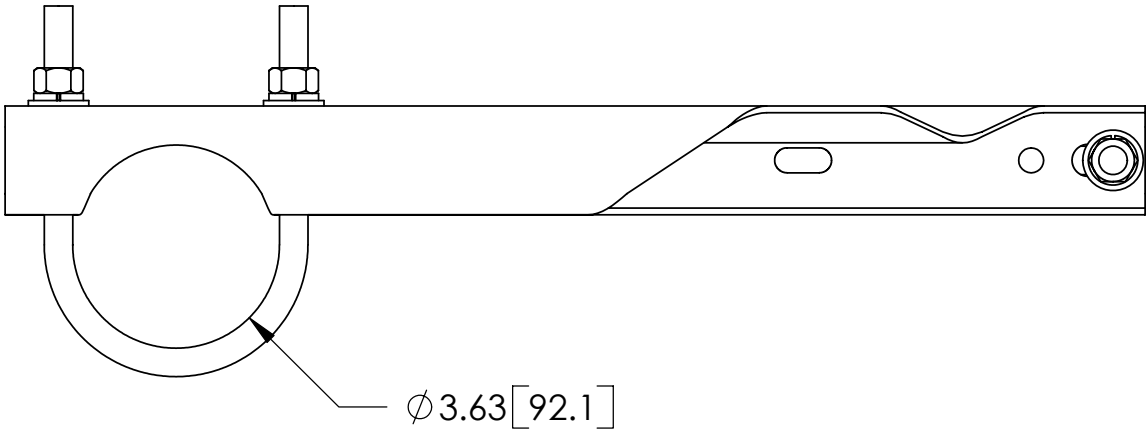
NOTES:
1. ALL METRIC DIMENSIONS ARE IN BRACKETS.

REVISIONS				
REV.	ZONE	DESCRIPTION	BY	DATE
A		INITIAL RELEASE	ACG	03/11/22

These drawings and specifications are proprietary property and may be used only for the specific purpose authorized in writing. ALL DIMENSIONS ARE IN INCHES U.O.S. TOLERANCES UNLESS OTHERWISE SPECIFIED: .X = ± .06 ANGLES ±2" .XX = ± .03 FRACTIONS ±1/32 .XXX= ± .010 REMOVE BURRS AND BREAK EDGES .005 DO NOT SCALE THIS PRINT	DRAWN BY: ACG	SHEET: 1 of 1	PART NUMBER: WBK110-Series
	CHECKED BY: MKV	SCALE: NTS	DESCRIPTION: 12" X 10' WAVEGUIDE BRIDGE KIT (BURIAL PIPE OR BASE SHOE)
	DATE: 03/11/22	MATERIAL: ASTM A36, A53, A568	DRAWING TYPE: ASSEMBLY DRAWING
	REVISION: A	FINISH: ASTM A123	
		WEIGHT: 294.22 LBS	

ITEM	PART NO.	DESCRIPTION	QTY.	WEIGHT
1	WBLB123.07	12" WAVEGUIDE BRIDGE SUPPORT BRACKET	1	4.71 LBS
2	GUB-4356	1/2" X 3-5/8" X 6" GALV U-BOLT KIT	2	0.83 LBS
3	WB-JB-6	1/2" J-BOLT	2	0.50 LBS
4	GWF-04	1/2" GALV FLAT WASHER	2	0.01 LBS
5	GWL-04	1/2" GALV LOCK WASHER	2	0.00 LBS
6	GN-04	1/2" GALV HEX NUT	2	0.01 LBS

REVISIONS				
REV.	ZONE	DESCRIPTION	BY	DATE
D		NEW DESIGN	DI	03/08/05
E		REPLACE WBLB12306 WITH WBLB12307	ACG	08/28/07

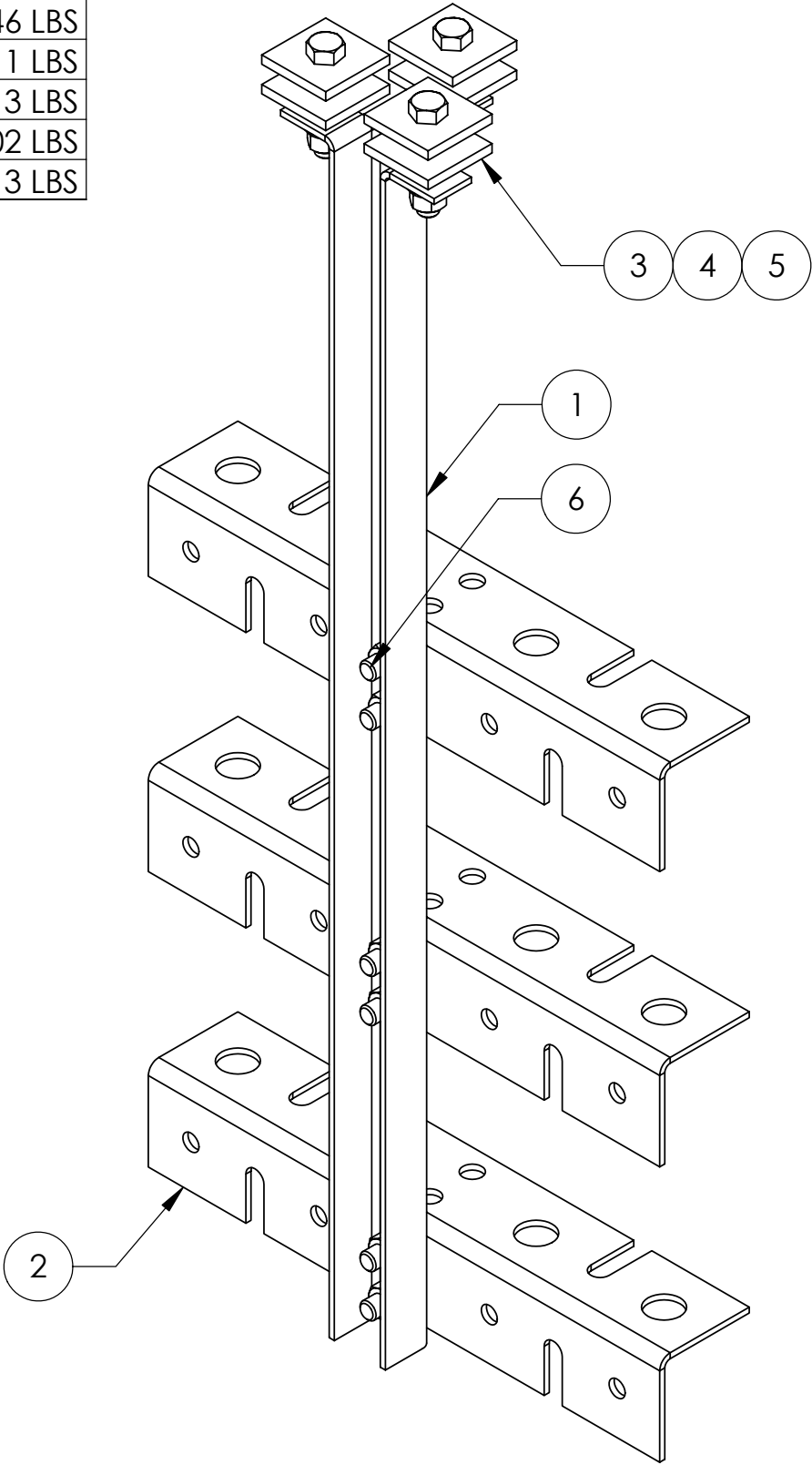


NOTES:
1. ALL METRIC DIMENSIONS ARE IN BRACKETS.

These drawings and specifications are proprietary property and may be used only for the specific purpose authorized in writing. ALL DIMENSIONS ARE IN INCHES U.O.S. TOLERANCES UNLESS OTHERWISE SPECIFIED: .X = ± .06 ANGLES ±2' .XX = ± .03 FRACTIONS ±1/32 .XXX= ± .010 REMOVE BURRS AND BREAK EDGES .005 DO NOT SCALE THIS PRINT	DRAWN BY: DI	SHEET: 1 of 1	PART NUMBER: WBLB123
	CHECKED BY: TP	SCALE: NTS	DESCRIPTION: 12" WAVEGUIDE BRIDGE SUPPORT BRACKET KIT
	DATE: 3/8/05	MATERIAL: A36	DRAWING TYPE: ASSEMBLY DRAWING
	REVISION: E	FINISH: GALV A123	
		WEIGHT: 7.81 LBS	

ITEM	PART NO.	DESCRIPTION	QTY.	WEIGHT
1	WBT243.01	VERTICAL TRAPEZE SECTION	1	2.55 LBS
2	WBT123.02	12" HORIZONTAL TRAPEZE SECTION	3	1.46 LBS
3	MT-387	SQUARE WASHER, 1½" X 1½" W/ 7/16" HOLE	6	0.11 LBS
4	GB-03205	3/8" X 2" GALV BOLT KIT	3	0.13 LBS
5	GWF-03	3/8" GALV FLAT WASHER	3	0.02 LBS
6	GB-03105	3/8" X 1" GALV BOLT KIT	6	0.13 LBS

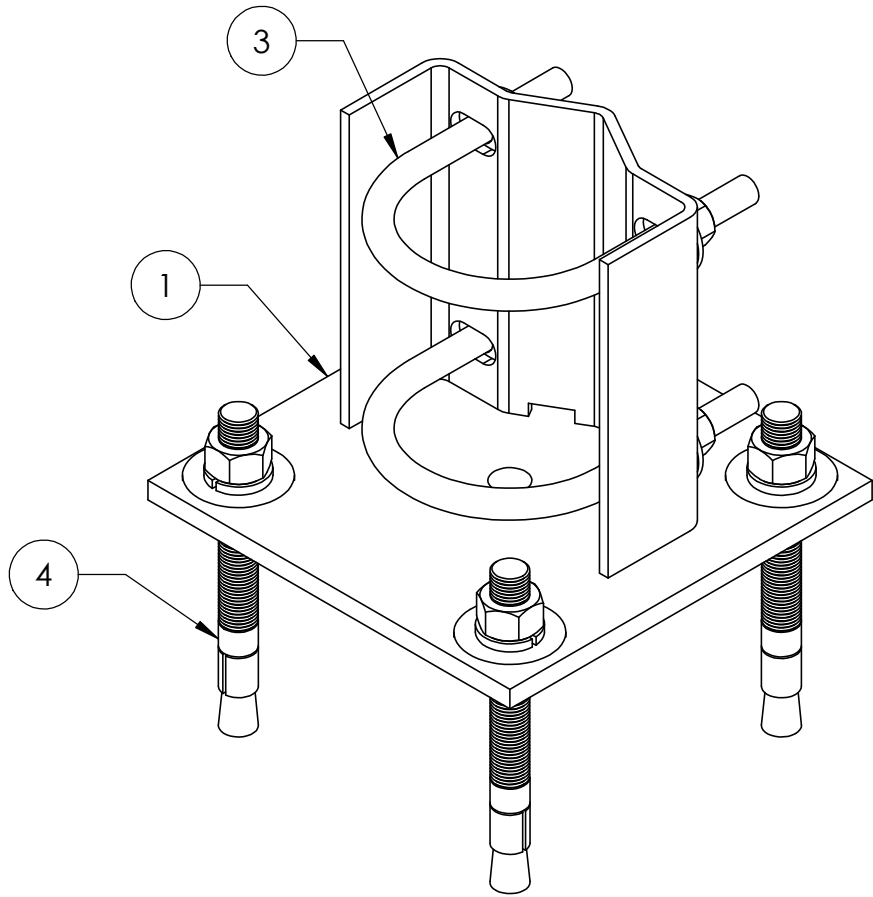
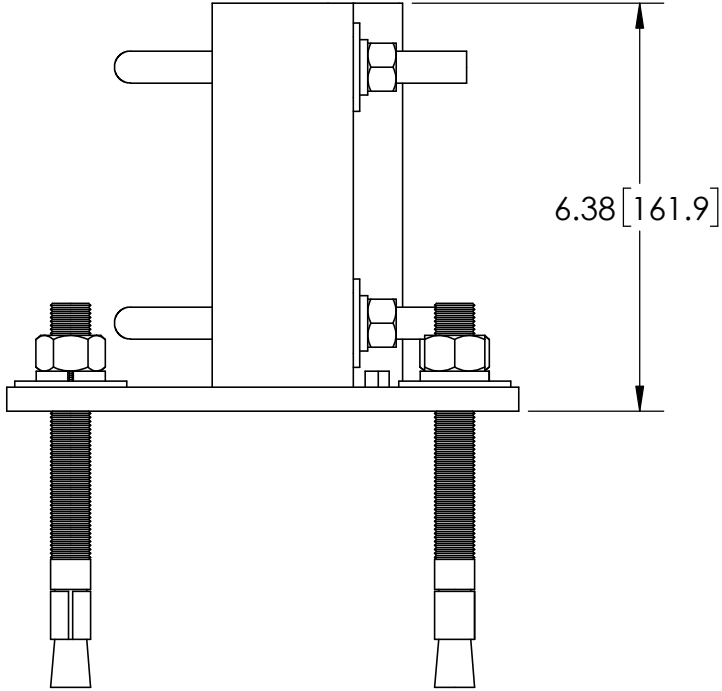
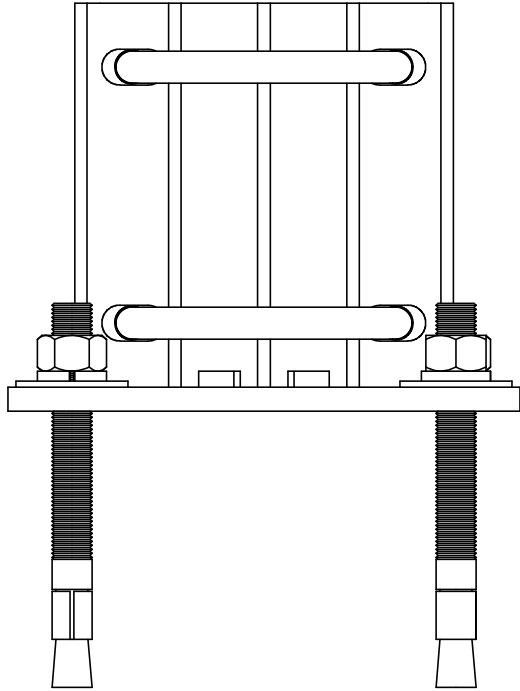
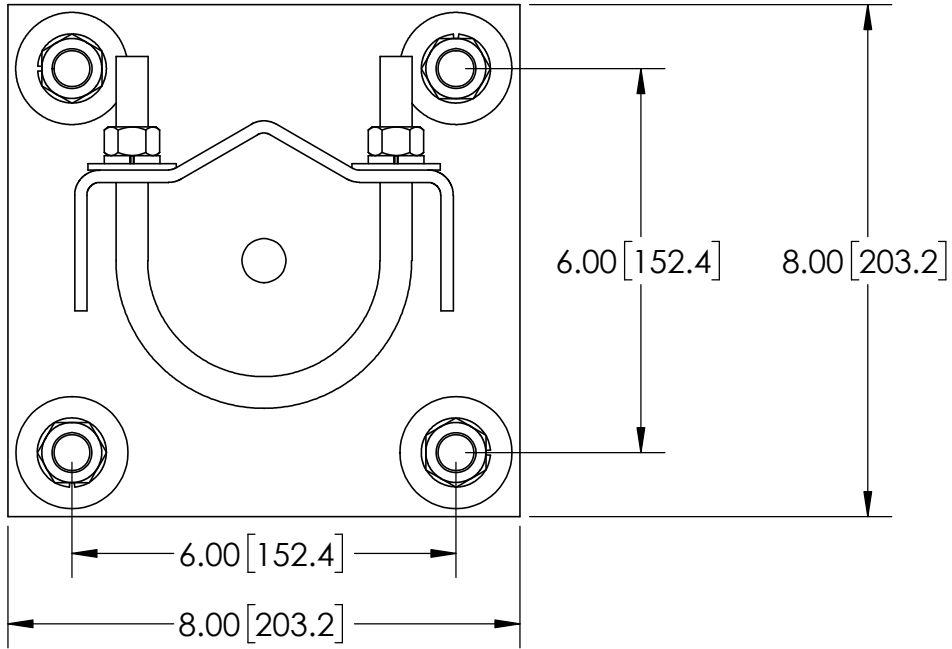
REVISIONS				
REV.	ZONE	DESCRIPTION	BY	DATE
D		REVISED	DI	1/26/05



These drawings and specifications are the proprietary property and may be used only for the specific purpose authorized in writing. ALL DIMENSIONS ARE IN INCHES U.O.S. TOLERANCES UNLESS OTHERWISE SPECIFIED: .X = .06 ANGLES 2° .XX = .03 FRACTIONS 1/32 .XXX= .010 REMOVE BURRS AND BREAK EDGES .005 DO NOT SCALE THIS PRINT	DRAWN BY: DI	SHEET: 1 of 1	PART NUMBER: WBT123
	CHECKED BY: TP	SCALE: NTS	DESCRIPTION: TRAPEZE KIT
	DATE: 01/27/05	MATERIAL: A36	DRAWING TYPE: ASSEMBLY DRAWING
	REVISION: D	FINISH: GALV A123	
		WEIGHT: 8.43 LBS	

ITEM	PART NO.	DESCRIPTION	QTY.	WEIGHT
1	WBBS.01	FOOT WELDMENT	1	9.81 LBS
2	WBBSH	HARDWARE KIT (ITEM# 3 & 4)	1	
3	GUB4355	1/2"-13 UNC X 3-5/8" X 5" GALV U-BOLT	2	0.72 LBS
4	MT-280	5/8" X 6" WEDGE ANCHOR KIT	4	0.47 LBS

REVISIONS				
REV.	ZONE	DESCRIPTION	BY	DATE
A		INITIAL RELEASE	ACG	10/18/13
B		REDESIGNED FOR USE WITH U-BOLTS	ACG	10/20/21



NOTES:

- ALL METRIC DIMENSIONS ARE IN BRACKETS.
- STAMP PART IDENTIFICATION NUMBER.
- WELDING WORKMANSHIP PER AWS D1.1, TABLE 6.1.

These drawings and specifications are proprietary property and may be used only for the specific purpose authorized in writing.	DRAWN BY: ACG		SHEET: 1 of 1	PART NUMBER: WBBS
	CHECKED BY: MKV		SCALE: NTS	DESCRIPTION: BASE SHOE FOR Ø3-1/2" O.D. PIPE
	DATE: 10/20/21		MATERIAL: ASTM A1011/A1018 Gr.36	DRAWING TYPE: ASSEMBLY DRAWING
	REVISION: B		FINISH: ASTM A123	
REMOVE BURRS AND BREAK EDGES .005			WEIGHT: 14.18 LBS	
DO NOT SCALE THIS PRINT				